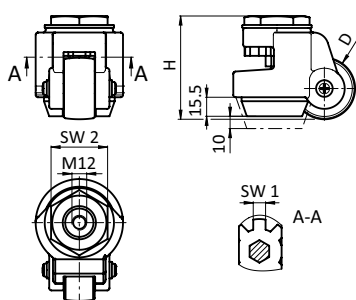


LEVELING CASTOR WITH BOLT HOLE THREAD

MODEL	with bolt hole thread
DESCRIPTION	Reliable leveling castor with bolt hole thread M12 For fixation to transport and base plates, threaded sleeves or threaded bushes; Roller movement locking by temporary positioning on stamp, actuation of the height adjustment of the stamp via adjustment wheel in the castor housing with wrench
MATERIAL	Bolt hole plate: Steel Housing: Aluminum die-cast Adjustment wheel: Plastic PA Stamp: Rubber NBR Roller: Plastic PA
SURFACE	Bolt hole plate: Zinc plated Housing: Powder coated
COLOR	Housing: White aluminum ≈ RAL 9006 Adjustment wheel: Orange ≈ RAL 2004 Stamp: Black Roller: Black
SET	4 leveling castors with bolt hole thread 4 double threaded bolts M8/M12 4 double threaded bolts M12/M12
PACK QUANTITY	4 pieces
TIP	Compatible transport and base plates with thread M8 or M12 on request

LEVELING CASTOR
WITH BOLT HOLE THREAD

H	D	Max. Load per Lifting Unit [kg]	SW 1	SW 2	Weight [g]	Part #
84	50	250 (M8/M12) 250 (M12/M12)	11	46	2588.0	098LF050AF46S01
103	62	350 (M8/M12) 500 (M12/M12)	12	65	4688.0	098LF062AF65S01

